

TV Manager User Guide

Overview

TV Manager is a digital signage tool and a comprehensive live sport and betting screens platform, specifically tailored to sports betting markets. It is an easy-to-use drag-and-drop media system that allows users to create and manage betting pages, view live sports, engage customers with promos, organize playlists, and much more.

The entire TV Manager system is based on a drag-and-drop method of management, i.e. all the user needs to do to see the content is to drag the desired content and drop it on the group of TV Manager set-top-boxes.

Content Types

Uploads



Uploads are mostly used to show any advertisement that the user wants.

Using Uploads TV Manager users can upload an unlimited number of promotions as videos, images, and PDFs directly to TV Manager and show them to their customers.

All Files can be uploaded directly from the TV Manager user interface.

Web Pages

Betting Web Pages are a core feature of TV Manager use in betting shops. They allow displaying of various games and products on TV screens anywhere TV Manager set-top-boxes are used.



Web Pages allow displaying web content, whether it's a webpage, an embedded video from an external video platform, or even an audio stream. Utilized to its max capabilities.

Currently, the most used case for web pages is displaying betting games in betting shops.

Texts

Texts can be used alongside other media types like uploads, web pages, TV channels, live events, and odds. Texts are mainly here to put out quick messages for customers to inform them about recent and mostly temporary changes.

There are 7 types of texts in TV Manager:

- Running Line
- Movie Credits
- Static Text Top Left
- Static Text Top Right
- Static Text Bottom Left
- Static Text Bottom Right
- Static Text Center

Logos

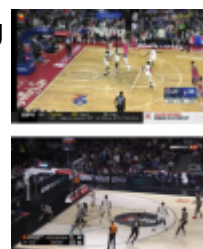
Logos similar to texts can be used alongside other media types like uploads, web pages, TV channels, live events, and odds. Logos are for showing any user uploaded logo on top of the playing media.



Logo position on the screen can be set by selecting from 4 predefined positions or by adjusting the custom position.

TV Channels

TV Manager allows users to watch sport or any other channels user wants by dragging and dropping the channel on the screen group.

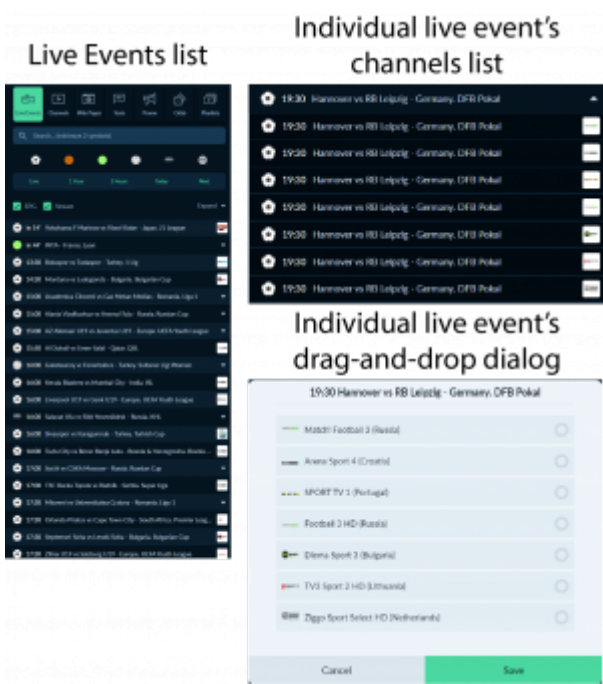


The user also has the possibility to display client-maintained IPTV channels.

Most TV channels have EPGs so users can easily follow the channel schedule.

Live Events

One of the main and best-utilized features of TV Manager is live events. There are more than 150 live channels to choose live sports events from. TV Manager features an easy-to-use interface where each user can choose which matches or sporting events he or she wants to view.



The following sports are currently included in the Live Events tab in TV Manager:

Football	Basketball
Tennis	Volleyball
Ice Hockey	American Football
Australian Football	Badminton
Baseball	Beach Badminton
Bowls	Boxing
Counter Strike	Cricket
Cycling	Boxing
Darts	Dota 2
E-Basketball	E-Football
Field Hockey	Futsal
Golf	Handball
Horse Racing	Indoor Football
League of Legends	Mixed Martial Arts
Rugby	Snooker
Squash	Table Tennis
Water Polo	

Odds



TV Manager allows sporting live events to be shown together with their live odds. Whether it is football, basketball, tennis, cricket, or any other sport, organizations can offer their customers an unparalleled betting and game-viewing experience in their betting shops and bars.

For all sports, the live odds experience is tailored to each sport specifically, meaning the betting markets and their changes throughout the event are customized to each sporting event. The bottom part of the odds stays constant throughout the match, offering the most popular betting options, such as winner, totals, and handicaps. The section on the right is tailored to the quarter or period the game is currently in, e.g. if a football match is currently in the 1st half, the betting markets on the right part of live odds will be tailored specifically to the first half of the match.

Playlists

Playlists combine all the TV Manager features into one solution for media management. Users can create and manage an unlimited number of playlists. All TV manager media types can be added to the playlist by dragging and dropping from the sidebar.



It is two types of playlists:

- All-day events - it is for playing and managing all content types except Odds and Live Events.
- Playlist events - can be used for playing and managing all types of media.

Login



Only the registered and logged in users can use the TV Manager. It is not possible to use TV Manager without logging in.

At first logging in the user can select the language in which the TV Manager will be presented. Later the language can only be changed by clicking on the user name in the navigation menu and selecting the wanted language from the languages dropdown menu.

To log in to the TV Manager user should enter the email as username and the password.

Navigation Menu

At the top navigation menu, the user can find:

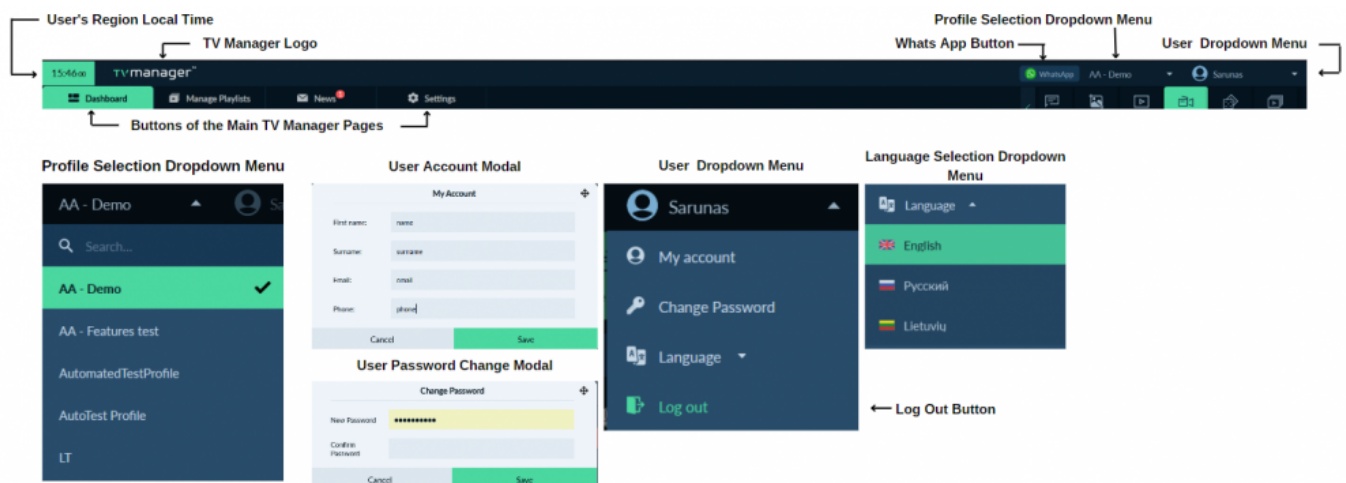
1. User selected region local time
2. TV manager logo

3. WhatsApp button - where the user can reach out to TV Manager support via What's App. By clicking on it the user will be redirected to the WhatsApp page.
4. Profile selection dropdown menu - where the user can select any of their managed profiles.
5. User dropdown menu - where the user can find multiple options like:
 1. My account - where user can update their info such as Name, Username, Email, and Phone Number.
 2. Password Change - where user can easily change their password by entering the new one. It is not required to enter the old password.
 3. Language Selection - at the language selection menu user can select from English, Russian or Lithuanian languages and all the TV Manager UI will be translated into the selected language.
 4. Log Out button - by clicking on it user easily can log out from TV Manager.

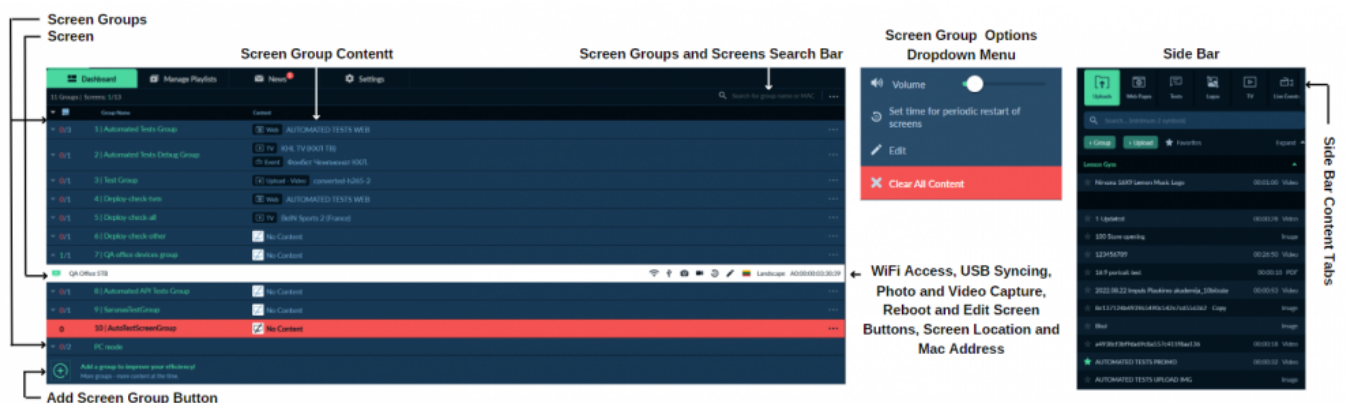
Under the top navigation, it is four buttons for the main TV Manager Pages:

- Dashboard
- Manage Playlists
- News
- Settings

The dashboard page will be displayed by default when the user logs in to the TV Manager.



Dashboard Page



The main page of the TV Manager is the Dashboard, where users can easily manage which content

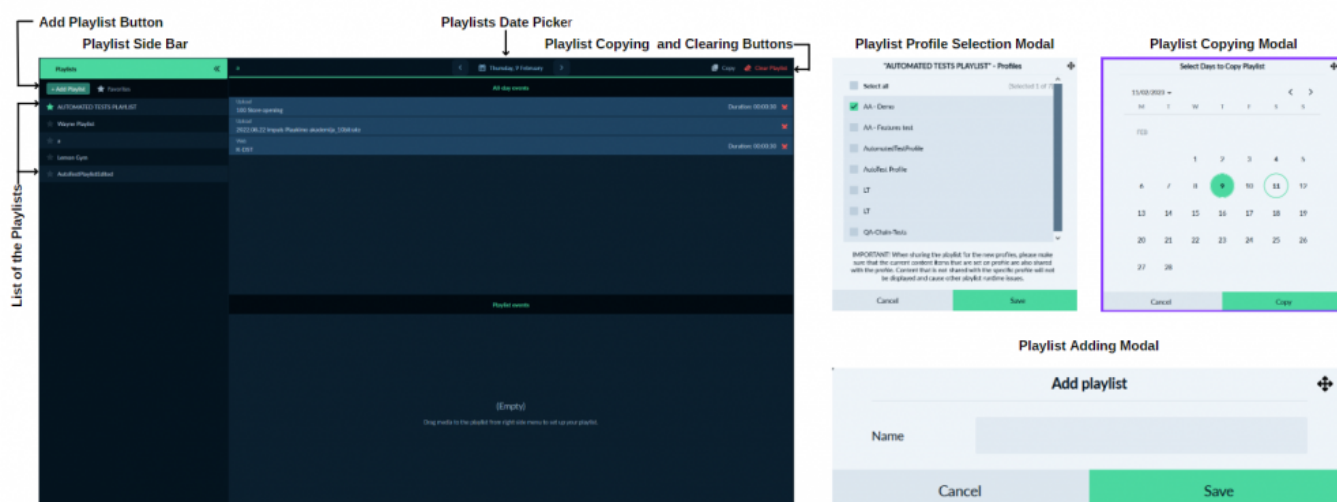
and on what screens should be played.

The three most important things on the Dashboard page are:

1. Screen Groups - a block of screens where the content should be dragged and dropped. What content is playing is also visible on the screen group. Screen groups have the possibility to change the volume of the screens in the group. It is also possible to edit screen groups, pause and clear TV, clear all content, and set periodic restarts for the screens in the group.
2. Screens - if the screen group is expanded all the screens of that group are displayed. Screens have multiple options like Wi-Fi access point setup, USB files syncing, photo and video capture, screen restart, and editing.
3. Sidebar - at the sidebar user can find all their content. All content easily can be played by dragging it from the sidebar to the Screen Group.

The sidebar is separated into eight sections of different content types, to navigate between these sections it is only needed to click once on the wanted section.

Playlist Management Page



The Playlist Management page is for Unlimited playlist management.

The Playlist Management page has a Playlist sidebar on the left screen side where a list of playlists is displayed.

For adding a new playlist the user should click on the "+ Add Playlist" button. It will open up the Playlist creation modal where the user needs to write a name for the playlist and click the "Save" button. The created playlist will appear in the playlist management page sidebar and on the sidebar playlists section on the dashboard. It is also possible to edit, select profiles and delete playlists.

To add content to the playlist user needs to select a playlist by clicking on it, then drag media to the playlist from the right-side menu to set up a media playlist. It is also possible to copy the playlist to another day and clear the playlist media.

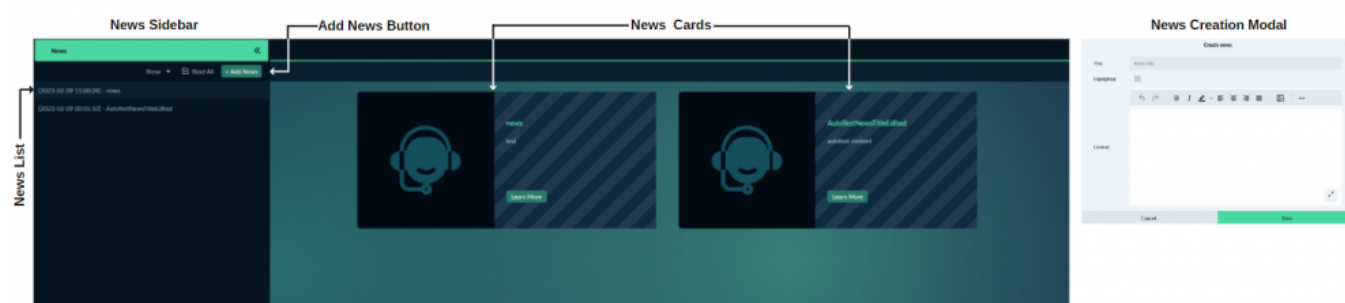
News Page

The News page is for news management and important information display for the user.

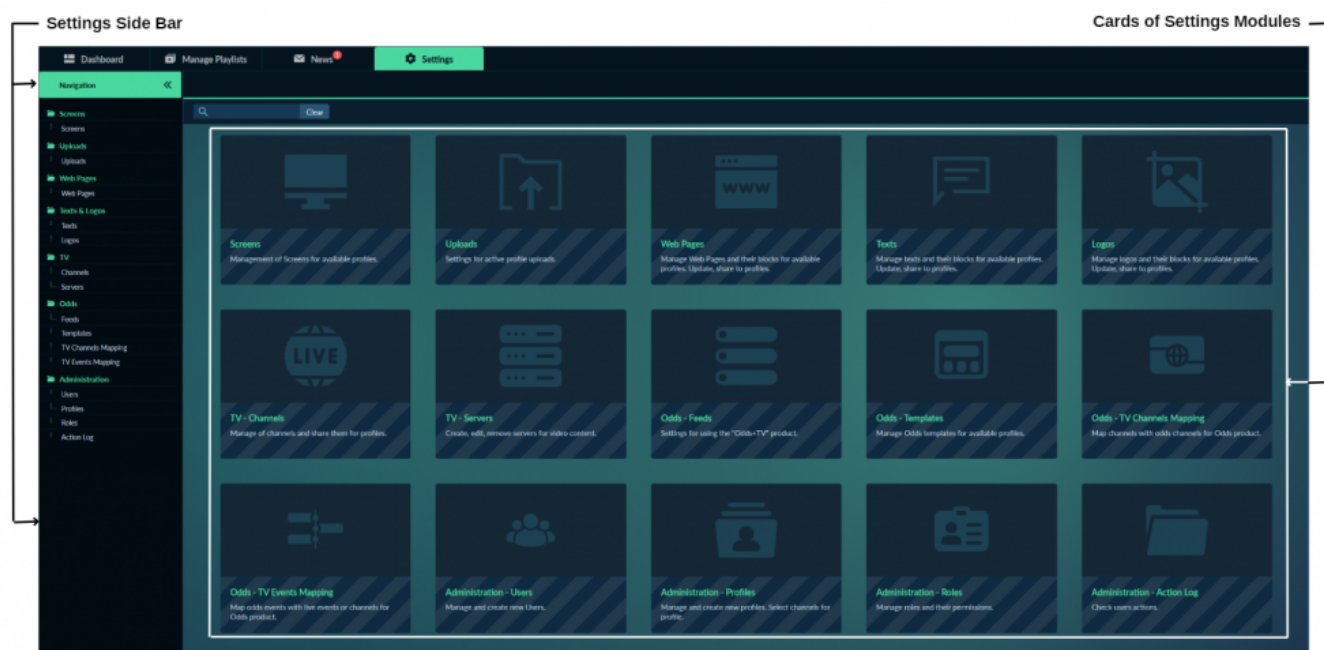
The news page has a navigation sidebar on the left screen side where all news is displayed. The news is also displayed as new cards.

For adding news the user should click on the "+ Add News" button. It will open up the news creating modal where the user needs to fill in information about the new webpage. It is needed to write a title, highlight the news or not, and if highlighted add a thumbnail, write a description, and click the "Save" button.

Created news will appear in the news page sidebar and as a news card.



Settings Page



On the Settings page, it is all TV manager managing options, content creation, editing settings and etc...

The settings page has a navigation sidebar on the left screen side where different modules of settings can be selected. It is also can be selected by clicking on the settings cards.

Screens

Create and Manage Groups Button

Add Screen Button

Screens Search Bar

Edit and Delete Buttons

Screens List

Screens														Columns: Name (1/13)	Refresh list
Name	Status	MAC address	Profile	Group	Last seen	IP	Location	Type	Orientation	Hardware	Firmware version	Application version			
KioskTV181	OFF	A0:90:00:00:00:01	AA - Demo	PC mode	2024-10-18 16:32...	N/A	N/A, N/A		Landscape	N/A	N/A	N/A			
workbook-test...	OFF	A0:90:00:00:00:01	AA - Demo	Automated Test G...	2023-02-06 15:48...	85.206.114.200	Ukraine, Kazan		Landscape	N/A	N/A	N/A			
test connection	OFF	A0:90:00:00:00:11	AA - Demo	Automated Test G...	2023-04-11 09:42...	N/A	N/A, N/A		Landscape	N/A	N/A	N/A			
AutoTestScreen	OFF	A1:00:00:00:00:00	AA - Demo	Automated Test G...	N/A	N/A	N/A, N/A		Landscape	N/A	N/A	N/A			

Screen Group Adding Modals

Select Profile

AA - Demo - Create and Manage Groups

Add Screen

There are three modals for screen management:

- Select Profile:** A modal to choose a profile from a list (AA - Demo, AA - Features test, AutomatedTestProfile, AutoTestProfile, EE, QA Chain Tests).
- AA - Demo - Create and Manage Groups:** A modal to create and manage screen groups. It shows a list of groups with their names, screen counts, and edit/delete buttons.
- Add Screen:** A modal to add a new screen. It contains fields for MAC Address, Name, Type, Orientation, Profile, Group, and Wi-Fi Access Points, along with Save and Cancel buttons.

ule is for screens and screen groups management for available profiles.

At the right side of the "Create and Manage Groups" and "+ Add Screen" buttons is a search bar where is the possibility to search for a screen by different search phrases like screen name, online status, MAC address, profile, screen group and by other columns displayed in the list of screens.

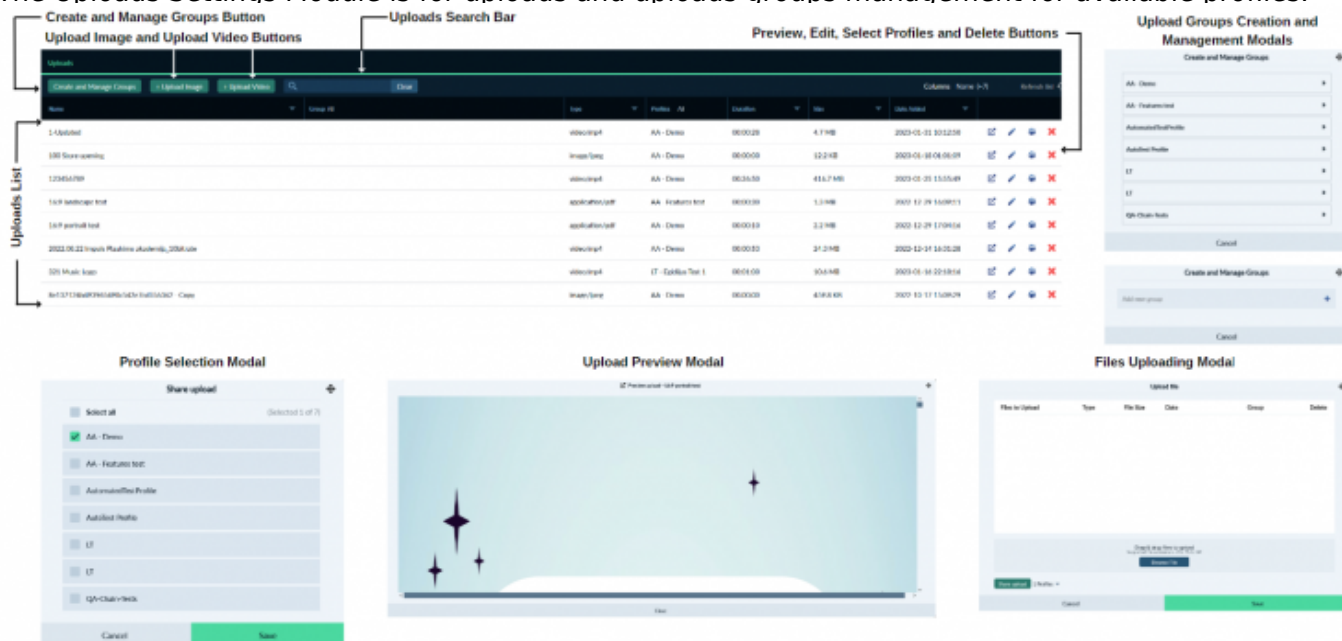
For adding a new screen group it only takes to click the "Create and Manage Groups" button, then select a profile in which the screen group should be created. The next step is to write the name of the wanted screen group and click the "+" to finish creating the screen group.

In this same modal of screen groups, can be set in which order they will be displayed on the dashboard page. The screen group order managing works very easily by clicking the up or down arrows on the screen group.

For adding a new screen the "+ Add Screen" button should be clicked. It opens a modal where the information of the screen like MAC address, and name should be entered. The other options like type, orientation, and group should be selected from dropdown menus. It is also possible to set up a Wi-Fi access point. After that screen can be saved and it will appear in the settings screens list and in the selected screen group on the dashboard page. It is also possible to delete and edit screens.

Uploads

The Uploads Settings Module is for uploads and uploads groups management for available profiles.



Same as on the settings-screens page on the uploads page it is a search bar where is the possibility to search for an upload by different search phrases.

For adding a new upload group it only takes to click the "Create and Manage Groups" button, then select a profile, write the wanted name for the upload group, and click the "+" to finish creating the upload group.

It is two types of uploads. The first type is images and the second is videos.

For adding a new upload image or video the user should click on the "+ Upload Image" or "+ Upload Video" buttons. It will open up the files uploading modal where files can be added to upload by browsing files or by dragging and dropping the files from the user's computer to the file uploading modal. Files can be added one by one or by adding multiple files at the same time.

At the same modal, it is also possible to select the upload group for every added file, delete files one by one or all together, change added file names, and share all files together to the wanted profiles.

All uploaded files will appear in the settings-uploads list and in the sidebar uploads tab on the dashboard page. It is also possible to delete and edit the upload, select profiles, and preview it.

Web Pages

The web pages Settings Module is for web pages and their groups managing for available profiles.

WebPages List

Name	Group	Profile	Protocol	Host	Path	Parameters	Actions
15-min	AA - Demo	AA - Demo	HTTP	www.advbets.com	/	-	[Edit] [Select] [Delete]
AutomatedTestProfile	AA - Demo	AA - Demo	HTTP	www.advbets.com	/	-	[Edit] [Select] [Delete]
AutomatedTestProfile	AA - Demo	AA - Demo	HTTP	www.advbets.com	/	-	[Edit] [Select] [Delete]
BB Virtuals	AA - Demo	AA - Demo	HTTP	www.advbets.com	/	-	[Edit] [Select] [Delete]
DD	AA - Demo	AA - Demo	HTTP	www.advbets.com	/	-	[Edit] [Select] [Delete]
India / Bollywood / Pop / Soft Rock - 24/7 Radio - Nice Guy Chill FM	AA - Demo	AA - Demo	HTTP	www.advbets.com	/	-	[Edit] [Select] [Delete]
K-POP	AA - Demo	AA - Demo	HTTP	www.advbets.com	/	-	[Edit] [Select] [Delete]
Tv manager	AA - Demo	AA - Demo	HTTP	www.advbets.com	/	-	[Edit] [Select] [Delete]

WebPages Groups Creation and Management Modals

Profiles Selection for WebPages Modal

Same as on the settings-screens page on the web pages page it is a search bar where is the possibility to search for a web page by different search phrases.

For adding a new web page group it only takes to click the "Create and Manage Groups" button, then select a profile, write the wanted name for the web page group, and click the "+" to finish creating the web page group.

For adding a new web page the user should click on the "+ Add Web Page" button. It will open up the web page creation modal where the user needs to fill in information about the new web page. It is needed to write a name for a web page, select a group of the web page and enter the wanted web page URL and click the "Save" button.

URLs of Web Pages are separated into different parts, for better filtering and search capabilities: Protocol, Host, Path, and Parameters.

The created web page will appear in the settings-web pages list and in the sidebar web pages tab on the dashboard page. It is also possible to delete and edit the web page, and select profiles.

Texts

The Texts settings module is for texts managing for available profiles.

Same as on the settings-screens page on the texts page it is a search bar where is the possibility to search for a text by different search phrases.

For adding a new text the user should click on the "+ Add Text" button. It will open up the text creation modal where the user needs to fill in information about the new text. It is needed to write a

d

ule is for channels and their groups managing for available profiles.

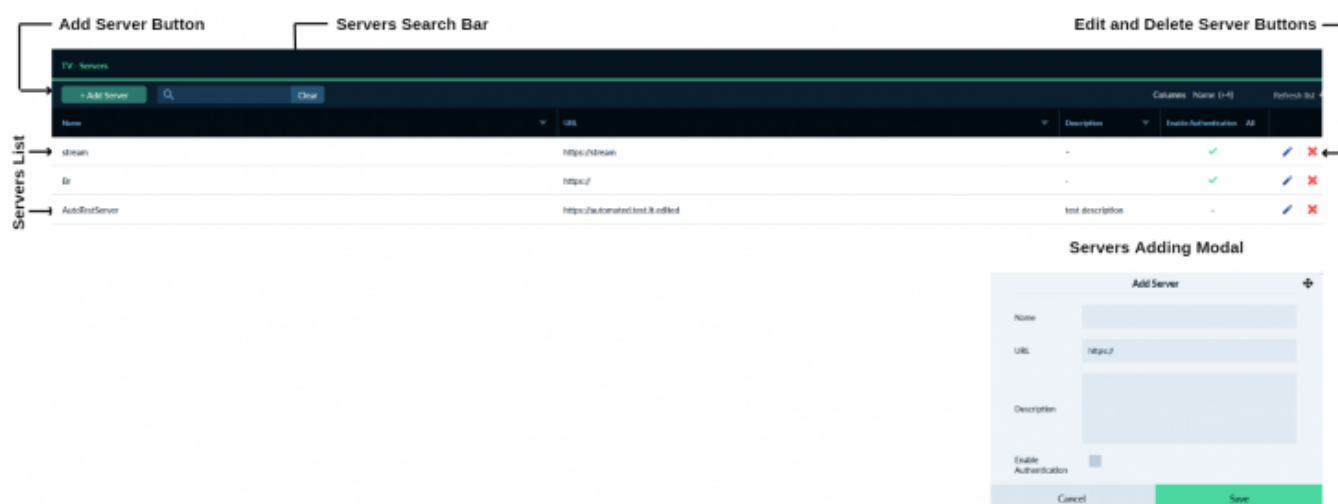
Same as on the settings-screens page on the channels page it is a search bar where is the possibility to search for a channel by different search phrases.

For adding a new channel group it only takes one click on the "Create and Manage Groups" button, write the wanted name for the channel group, and click the "+" to finish creating the channel group.

For adding a new channel the user should click on the "+ Add Channel" button. It will open up the channel creation modal where the user needs to fill in information about the new channel. It is needed to write a name and path of the channel, select a group, logo, server, EPG, custom server, and click the "Save" button. It is also possible to delete, edit and select profiles for the channel.

Created Channel will appear in the Settings Channels list and in the Sidebar TV tab on the dashboard page.

Servers



ings Module is for servers management for available profiles.

Same as on the settings-screens page on the servers page it is a search bar where is the possibility to search for a server by different search phrases.

For adding a new server the user should click on the "+ Add Server" button. It will open up the server creation modal where the user needs to fill in information about the new server. It is needed to write a name, URL, and description of the server, enable or disable authentication, and click the "Save" button.

The created server will appear in the settings servers list and it will be possible to select the new server when creating or editing the channel. It is also possible to delete and edit the server.

Feeds

Odds Feeds Search Bar

Odds Feeds Edit, Select Profiles and Delete Buttons

Odds Feeds List

Name	Provider	ID	Token	Status	Actions
betradar (6554)	betradar	6554		Off	[Edit] [Select] [Delete]
betradar (7150)	betradar	7150	cW5e3d5upLppp5wy9	On	[Edit] [Select] [Delete]
betradar (7171)	betradar	7171		Off	[Edit] [Select] [Delete]
betradar (11852)	betradar	11852		Off	[Edit] [Select] [Delete]
betradar (24791)	betradar	24791	blt5dE5nefBc3W6G	On	[Edit] [Select] [Delete]
betradar (27005)	betradar	27005		Off	[Edit] [Select] [Delete]
betradar (28165)	betradar	28165		Off	[Edit] [Select] [Delete]
betradar (30526)	betradar	30526		Off	[Edit] [Select] [Delete]
betradar (33714)	betradar	33714		Off	[Edit] [Select] [Delete]
betradar (36834)	betradar	36834	ll	Off	[Edit] [Select] [Delete]

Odds Feed Editing Modal

Edit Odds Feed betradar (6554)

Name: betradar (6554)

Token: [Empty Field]

Enabled: ☐

Buttons: Cancel, Save

Odds Feeds Profile Selection Modal

"betradar (6554)" - Profiles

Select all (Selected 0 of 7)

- AA - Demo
- AA - Features test
- Automated testProfile
- Autotest Profile
- LT
- LT
- QA Chain Tests

Buttons: Cancel, Save

The Odds Feeds Settings Module is for settings for using the "Odds+TV" product management.

Same as on the settings-screens page on the odds feeds page it is a search bar where is the possibility to search for a feed by different search phrases.

For a user, it is not possible to add a new feed, it should be made by TV Manager Support. Separate odds can be edited or deleted, also it is possible to select profiles for the odds feeds.

Templates

The Odds Templates Settings Module is for Odds Templates management for available profiles.

Same as on the settings-screens page on the odds templates page it is a search bar where is the possibility to search for a template by different search phrases.

For adding a new template it is needed to click on the "+ Add Odds Template" button. It will open up the odd template creation modal where it is needed to fill in information about the new template. It is needed to write a name, and URL, select profiles and click the "Save" button.

The created odd template will appear in the settings-odds-templates list. It is also possible to delete and edit the odd template.

Odds Template Add Button
Odds Templates Search Bar

Odds Template Edit and Delete Buttons

Odds Templates List

Name	URL	Profile	Alt	Refresh	Del
AUTOMATED TESTS TEMPLATE	www.madhyas.it	AA	Demo		
AUTOMATED TESTS TEMPLATE C IWIN	https://www.google.it	QA	Chale-Test		
AutomatedOddsTemplate	http://www.test.test.net	AA	Demo		
AutoTestOddsTemplate	https://www.test.test	AA	Demo		
AutomatedOddsTemplate	http://www.test.test	AA	Demo		
AutoTestOddsTemplate	https://www.test.test	AA	Demo		
Odds-TV BM424791	http://odds.screen.adobet.com/event/br24791/config?r=https%3A%2F%2Ftest-backend.adobet.com%2Fv1%2Ftab-public%2Fscreen%2Fshop...	AA	Demo		
Odds-TV BM42791 Chale-Test	https://odds.screen.adobet.com/event/br24791/config?r=https%3A%2F%2Ftest-backend.adobet.com%2Fv1%2Ftab-public%2Fscreen%2Fshop...	QA	Chale-Test		
Odds-TV BM42791	http://odds.screen.adobet.com/event/br24791/config?r=https%3A%2F%2Ftest-backend.adobet.com%2Fv1%2Ftab-public%2Fscreen%2F...	AA	Demo		
Odds-TV BM4554	https://odds.screen.adobet.com/event/br24791/config?r=https%3A%2F%2Fprod-sa1-backend.adobet.com%2Fv1%2Ftab-public%2Fscreen%2F...	AA	Demo		
Odds-TV BM47150	http://odds.screen.adobet.com/event/br24791/config?r=https%3A%2F%2Ftest-backend.adobet.com%2Fv1%2Ftab-public%2Fscreen%2F...	AA	Demo		
test123	https://www.google.com	AA	Demo		

Odds Template Adding Modal

Add Odds template

Name:

URL:

Profile:

TV Channels Mapping

The Odds channels TV Channels Mapping settings module is for TV channels with odds channels mapping.

Same as on the settings-screens page on the odds channels TV channels mapping page it is a search bar where is the possibility to search for odds or TV channels by different search phrases.

It is two possibilities to map odds channels to the TV channel. The first is by dragging and dropping the TV channel from the content sidebar to the odds channel. The second one is by editing the odds channel and selecting the TV channel from the TV selection modal.

Odds and TV Channels Search Bar

Manage Playlists | News | Settings

Odds - TV Channels mapping

Search... [Clear] Refresh list

Odds channel	TV Channel
Fox Sports 1	TV None
A Sport IR	TV None
ARC US	TV None
AD SPORT 1 HD	TV None
Amazon Prime FR	TV None
AMON	TV None
ANT-1	TV None
Antena 1 RO	TV None
Aragon TV	TV None
ARD Alpha	TV None
ARD Sportchau	TV None
Avenaf	TV None
ATV	TV None
ATV TR	TV None
Azieta America	TV None
BARCA TV	TV None
Bayrisches Fernsehen Nord HD	TV None
Bayrisches Fernsehen Süd HD	TV None
BBC 1 East (W)	TV None

Content Sidebar

Search... [Refresh] [TV]

EPG

Live 1 Hour 2 Hours Today Next

EPG Live Events Favorites Expand

Automated Tests Channels Group

DetN Remote Control

betN Sports 1 HD

betN Sports 10 HD

betN Sports 11 HD

betN Sports 12 HD

betN Sports 13 HD

betN Sports 14 HD

betN Sports 15 HD

betN Sports 16 HD

betN Sports 17 HD

betN Sports 2 HD

betN Sports 3 HD

betN Sports 4 HD

betN Sports 5 HD

betN Sports 6 HD

betN Sports 7 HD

Odds Channels List

TV Channels List

TV Events Mapping

Events Mapping Filters

Manage Playlists | News | Settings

Odds - TV Events Mapping

Thursday, 9 February

Filter by: [Icons]

Refresh list

Odds	TV Channel
Unassigned Victoria vs Queensland Bulls betradar (24/7)	Sheffield Skytel
Unassigned India vs Australia betradar (24/7)	betradar (24/7)
Unassigned Jakarta SBO vs Jakarta DSI 46 betradar (24/7)	BBI Proliga
Unassigned Zabalkala Chita vs Altay Agas Ramad betradar (24/7)	Vysokaya Liga B, Women
Unassigned CA Sacramento de Juarez vs Colon de Santa Fe Reserve betradar (24/7)	Liga Profesional, Reservas

Content Sidebar

Search... [Refresh] [Live Events] [TV]

EPG Stream Expand

Thursday, 9 February

17:00 WTA - United Arab Emirates, Abu Dhabi

18:00 WTA - Australia, Urru

19:00 A1H - France, Montpellier

20:00 Awangard Omsk vs CSKA Moscow - Russia, RBL

21:00 Al Sadd vs Al Ahli - Qatar, Qatar Cup

22:00 Maghrebien vs Vityaz Balashikha - Russia, KHL

18:00 Czech Republic vs Ireland - Europe, European Championship...

18:00 Romania vs Spain - Europe, European Championship Women

18:00 Zenit Petersburg vs Uralmash Ekaterinburg - Russia, Russian...

18:30 BC Wolves vs Szczecin - Europe, EMBL

18:30 Nizhnekamsk vs Vladivostok - Russia, KHL

18:30 Orlayn vs Rzesow - Poland, Proliga

18:45 Al Duhail vs Al Wakra - Qatar, Qatar Cup

19:00 Poland vs Turkey - Europe, European Championship Women

19:30 Lithuania vs France - Europe, European Championship Women

19:45 Twente vs Ajax - Netherlands, KNVB Beker

20:00 ATP - USA, Dallas

20:00 ATP - USA, Dallas

20:00 Czech Republic vs Sweden - Europe, Beijer Hockey Games

Odds

Live Events List

The Odds TV Events Mapping settings module is for TV channels or TV events with odds events mapping.

To map an odds event to the TV channel or TV event it is needed to drag and drop the TV channel or TV event from the content sidebar to the selected odd event.

It is possible to filter events mapping by odds feeds or by different sports.

For some odd events the "!" is attached with a suggestion on which channel should be mapped.

Users

The screenshot displays the 'Users Management' interface. At the top, there's a navigation bar with 'Add User Button' and 'Users Search Bar'. The main table lists users with columns for Username, Name, Email, Role, Profiles, Status, and Actions. Below the table, three modal windows are shown: 'User Creation Modal' with fields for Email, Password, Confirm Password, First Name, Surname, Phone, Role, Profile, Screen Group Order, and Enabled; 'Password changing Modal' with fields for Old Password, New Password, and Confirm Password; and 'Profiles Selection Modal' with a list of profiles to select. The interface is dark-themed with a light blue sidebar.

le is for user creation and management.

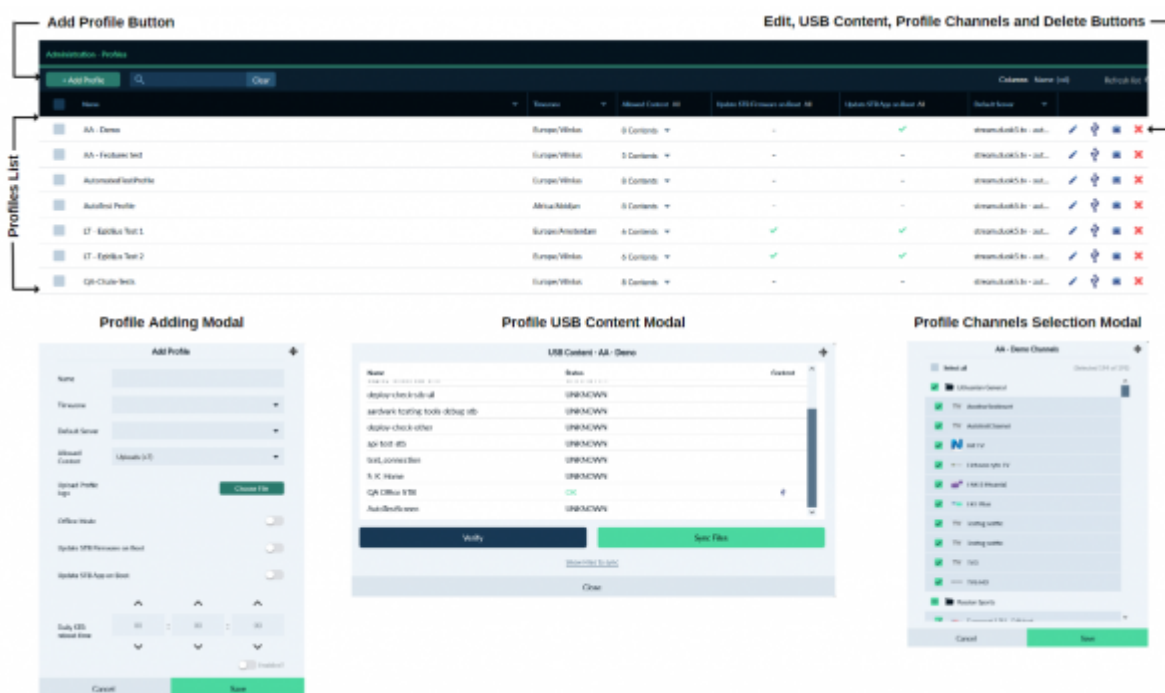
Same as on the settings-screens page on the users page it is a search bar where is the possibility to search for a user by different search phrases.

For adding a new user it is needed to click on the "+ Add User" button. It will open up the user creation modal where it is needed to fill in information about the new user. It is needed to write an email, password, first name, surname, and phone, select role, and profiles, and click the "Save" button.

Created user will appear in the settings-users list and the created user can now log in to the TV Manager. It is also possible to delete and edit the user, select profiles, and change passwords.

Profiles

The Profiles Settings Module is for profiles management. On the settings-profiles page the list of all profiles added to TV Manager is displayed.



Same as on the settings-screens page on the profiles page it is a search bar where is the possibility to search for a profile by different search phrases.

For adding a new profile the user should click on the "+ Add Profile" button. It will open up the profile creation modal where the user needs to fill in information about the new profile. It is needed to write a name, select the time zone, default server, and allowed content, upload profile logo, enable or disable offline mode and firmware and app updates on boot, select daily STB reboot time if needed, and click the "Save" button.

Created Profile will appear in the Settings Profiles list. It is also possible to delete and edit the profile, select TV channels that will be available to be used on the profile, and manage USB content on the Set-top-boxes of the profile.

It is a possibility to set an update STB firmware and app on boot, for multiple selected profiles by selecting wanted profiles and clicking the update buttons above the profiles list.

Roles

The Roles Settings Module is for roles and their permissions management.

The screenshot displays the 'Roles List' interface. At the top, there are three main sections: 'Role Adding Modal', 'Roles List', and 'Role Editing and Deleting Buttons'. The 'Role Adding Modal' is a sidebar on the left with a form to add a new role. The 'Roles List' is a table with columns for 'Permissions', 'Role Name', 'Role ID', 'Role Status', 'Role Group', and 'Role Action'. The 'Role Permissions Modal' is a sidebar on the right with a form to add permissions. The table shows a list of roles with their respective permissions and actions.

For adding a new role the user should click on the "+ Add Role" button. It will open up the role creation modal where the user needs to fill in information about the new role. It is needed to write a name and description, select wanted permissions, and click the "Save" button.

The created role will appear in the settings roles list and it will be possible to select the role when creating or editing the user. It is also possible to delete and edit the role and their permissions.

Action Log

Action Log Date Search Bar

Action Log Date Filter

Administration - Action Log

Clear

2023-01-31 - 2023-02-07

Columns: Username (40)

Username	Object Type: All	Action: All	Object Name	IP	Time
qatestaandark	Channel	add	Channel: AutoTestChannel	65.108.233.123	2023-02-01 00:01:08
qatestaandark	User	login	User: qatestaandark	-	2023-02-01 00:01:13
qatestaandark	News profile	remove	NewsID: 1405, ProfileID: 1	65.108.233.123	2023-02-01 00:01:21
qatestaandark	News	add	News Title: AutoTestNewsTitle	65.108.233.123	2023-02-01 00:01:24
qatestaandark	User	login	User: qatestaandark	-	2023-02-01 00:01:31
qatestaandark	Odds template	remove	Template: AutoTestOddsTemplate	65.108.233.123	2023-02-01 00:01:39
qatestaandark	Odds template	add	Template: AutoTestOddsTemplate	65.108.233.123	2023-02-01 00:01:41
qatestaandark	User	login	User: qatestaandark	-	2023-02-01 00:01:47
qatestaandark	Playlist	remove	Playlist: AutoTestPlaylistEdited	65.108.233.123	2023-02-01 00:01:55
qatestaandark	Playlist	add	Playlist: AutoTestPlaylist	65.108.233.123	2023-02-01 00:01:56
qatestaandark	User	login	User: qatestaandark	-	2023-02-01 00:02:03
qatestaandark	Profile	remove	Profile: AutoTestedTestProfile	65.108.233.123	2023-02-01 00:02:11
qatestaandark	Profile	add	Profile: AutoTestedTestProfile	65.108.233.123	2023-02-01 00:02:12
qatestaandark	User	login	User: qatestaandark	-	2023-02-01 00:02:21
qatestaandark	Role	remove	role: AutoTestRoleEdited	65.108.233.123	2023-02-01 00:02:30
qatestaandark	Role	add	role: AutoTestRole	65.108.233.123	2023-02-01 00:02:31
qatestaandark	User	login	User: qatestaandark	-	2023-02-01 00:02:37
qatestaandark	Screen	remove	Screen: AutoTestScreen	65.108.233.123	2023-02-01 00:02:45

s for user action checking. On the settings-action log page, the list of all actions made in the TV Manager is displayed.

Same as on the settings screens page on the action log page it is a search bar where is the possibility to search for an action by different search phrases. It is also possible to filter actions by date, action,

and object type and to sort by name, object type, action object name, IP, and time.

On every action log item row, it is an "I" icon, by clicking on it the user can see more info about the action.

From:

<https://wiki.advbets.com/> - **Aardvark Technologies Wiki**

Permanent link:

<https://wiki.advbets.com/tv-manager/user-guide?rev=1678698019>

Last update: **2023/03/13 09:00**

